

# SOURCE

by ExtractCraft



## Turbo Mode User Manual



## **TURBO MODE USER MANUAL**

Version 02 October 24, 2016

Part # 1007-1051

ExtractCraft

105 South Sunset Street, Unit M,

Longmont, CO, 80501

United States

Phone: 720-307-8628

customer support: [\*\*info@extractcraft.com\*\*](mailto:info@extractcraft.com)

sales: [\*\*sales@extractcraft.com\*\*](mailto:sales@extractcraft.com)



## CONTENTS

<b>Safety.....</b>	<b>1</b>
Safety & Plant extract warning	
<b>The Source Main Features.....</b>	<b>2</b>
Appliance for Plant Extractions	
Alcohol Solvent	
<b>Making a Plant Extract.....</b>	<b>3</b>
<b>Care &amp; Cleaning.....</b>	<b>9</b>
<b>Mobile Application.....</b>	<b>10</b>
Installing the Mobile App	
Setting up Bluetooth	
Launch the Source App	
Using the Menu	
Understanding the Control Screen	
<b>Altitude Tuning.....</b>	<b>13</b>
<b>Botanical Recipes.....</b>	<b>14</b>
<b>Troubleshooting.....</b>	<b>15</b>
<b>Technical Specifications.....</b>	<b>16</b>
<b>Warranty.....</b>	<b>16</b>
<b>Glossary.....</b>	<b>16</b>

## SAFETY



**WARNING:** For your safety always allow all metal parts of the Source to completely cool before handling. The reservoir cup, collector, and metal top on the base can get very hot.



**WARNING:** For your safety and convenience always follow these safety guidelines:

- **Place the Source well away from heat sources**, direct sunlight, or places where heat may become concentrated.
- Inspect the outer collector for cracks or any defect and ensure that the lid and lower seal fit securely. **Do not use the Source** if parts are damaged in any way.
- **Alcohol is inherently flammable.** However, when used as instructed, the Source is designed to be completely safe. The Source operates well below the ignition temperature of alcohol. The alcohol is contained in a vacuum where no air for its combustion is present. **Always use caution** when handling alcohol and keep it well away from any kind of flame or ignition source. Keep alcohol away from children and pets.
- **Always allow the outer collector to cool** before opening the lid.
- Do not immerse base unit in water or liquid of any kind.

## PLANT EXTRACT WARNING



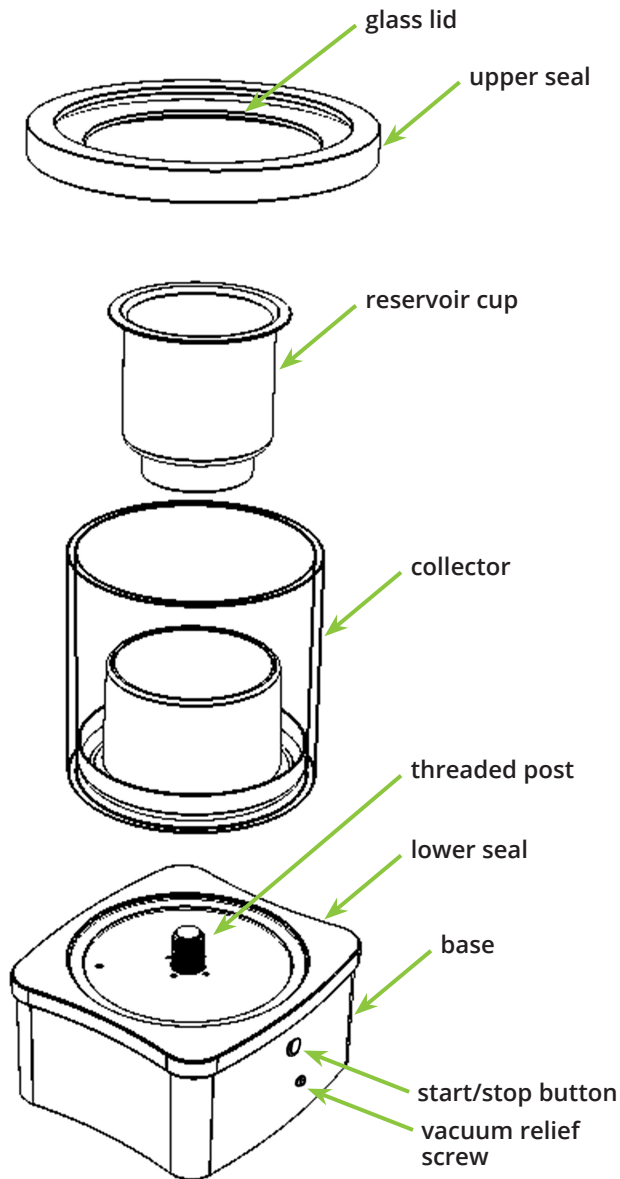
**WARNING:** Some plant extracts are potentially dangerous due to the toxicity of concentrated chemical components and may be harmful or even deadly if ingested or absorbed through skin or membranes.

Some essential oils that would do no harm in a diluted form may do serious harm in higher concentrations. The internal use of essential oils can also pose hazards to pregnant women.

The **flash point** (temperature at which a compound gives off sufficient vapor to ignite) of each plant extract is different. Many common oils, such as tea tree, lavender, and citrus oils are classified as flammable liquids.

Essential oils valued for aroma-therapeutic qualities may cause skin irritation, allergic reactions and other health problems. You must determine the hazards and handling requirements of the particular oils you extract.

ExtractCraft makes no claims about essential oils and their uses. This is simply a device for extracting them.



The Source: Main Parts

## THE SOURCE MAIN FEATURES

### APPLIANCE FOR PLANT EXTRACTIONS

The Source is an easy to use home appliance for extracting plant essences.

Plant essences are key to the smell, taste, and other properties of plants and are used in flavorings, perfumes, herbal extracts and medicinals.

The first step in making plant extracts is to make a **tincture**. A tincture is a solution made from the combination of plant matter and food-grade alcohol.

The second step is to use the Source to extract the plant essences from the tincture. Lavender, mint, hops, rosemary, cinnamon, radishes, calendula flowers and many other plants have been used successfully. The oils of some plants, such as mint and lavender, dissolve in alcohol very quickly (5 to 20 minutes). Others, such as vanilla or rose petals, may take hours or longer for the best result. Some extracts benefit from using alcohol that has been thoroughly chilled in the freezer during the tincture process, others are best prepared at room temperature. See [www.extractcraft.com](http://www.extractcraft.com) for more information, recipes and links and share your own results.

### ALCOHOL SOLVENT

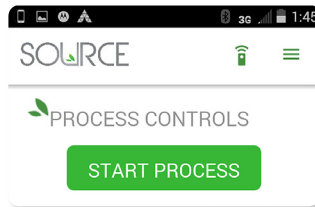


We recommend food-grade, grain alcohol of 190-proof and 95% alcohol. **Do not use methanol (wood alcohol)**. Alcohol percentages lower than 95% result in water left in the extracted oils and may affect quality, especially during product storage. The Source removes the alcohol from the tincture, leaving the pure plant essence. The alcohol is captured for reuse.

## MAKING A PLANT EXTRACT

### 1. INSTALL THE MOBILE APP

The Source app is a great way to monitor the time, temperature, and vacuum while making plant extracts. Install it using the information in [Mobile App on page 10](#) for an optimal user experience.



*Install the app.*

### 2. GATHER THE NEEDED SUPPLIES

You will need:

- a glass container
- 2 oz. plant matter
- 10 oz. 190-proof grain alcohol
- strainer and filters
- funnel for rebottling the alcohol
- suitable container for storing extract



*Supplies*

### 3. MAKE THE TINCTURE

Place clean plant matter in a clean glass container. Divide large pieces into similar smaller lengths for good fit. Cover with 190-proof grain alcohol to about 1/4" above the plant volume. Allow the plant matter to soak for 5-20 minutes or more. See [www.extractcraft.com](http://www.extractcraft.com) for recipes specific to your botanicals.



*Make the tincture.*

### 4. UNSCREW THE CUP FROM THE BASE

Reach inside the collector and unscrew the reservoir cup from the base.



*reservoir cup*

## 5. STRAIN THE TINCTURE

Strain the tincture into the reservoir cup. Use a strainer, coffee filter, or Buchner funnel to remove particles.

**Tip** The repeat and thorough filtering results in a more clear end product.

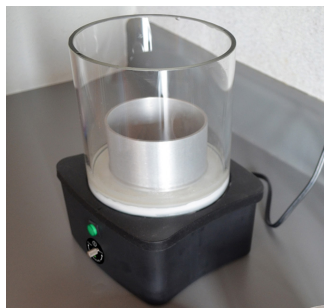


reservoir cup

Strain the tincture into the reservoir cup.

## 6. READY THE SOURCE

Place the Source on a flat surface. Check that the lower seal is aligned with the base. Ensure the outer collector is seated properly in the recess of the lower seal on the base. A vacuum will be formed in the collector, so it must make good contact with the lower seal.



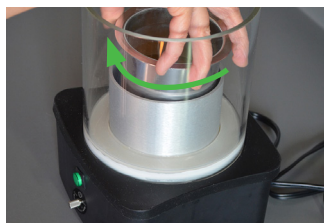
Ready the Source.

## 7. INSTALL THE RESERVOIR CUP

Carefully reach inside the collector and gently screw the reservoir cup onto the threaded post.



**Lightly screw by hand only. Do not 'tighten'.**



Screw the reservoir cup onto the threaded post of the base lightly.

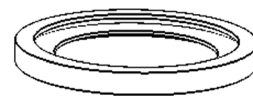
## 8. PLACE THE LID

Place the lid flat with the wide rubber seal facing down and in contact with the glass collector rim.

Once the Source is in operation, a vacuum is created and the lid will be held firmly in place with hundreds of pounds of negative pressure.



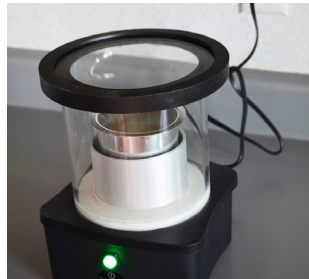
Place the lid on the collector.



**Tip** The wider rubber ring of the upper seal rests on the rim of the collector. The narrower rubber ring is up.

### 9. PLUG IN THE SOURCE

Plug the Source into a 120 VAC outlet. The indicator button on the base glows steady green when the Source has power and is ready for use. If the button is not lit, then the Source is not getting power. When the Source is plugged in, the fan runs to ventilate the base.



Plug in the Source.

### 10. SEAL THE VACUUM

Turn the vacuum valve screw fully to the **right** to close the vacuum release valve.

(When turned to the left, the vacuum relief opens to allow air into the unit, releasing the vacuum seal so the lid may be removed.)



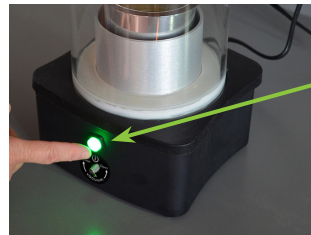
Turn the screw fully to the **RIGHT** to seal the chamber.

Never remove screw completely.

### 11. START THE SOURCE

Press the green button once *or* select the **START PROCESS** button on the app to start in normal mode.

- **1 slow flash** of the green button indicates the process starting.
- **2 fast flashes** indicates stopping.



**1 slow flash** = process is starting  
**2 fast flashes** = process is stopping

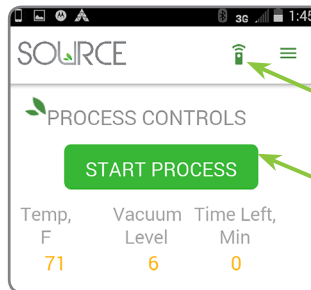
Press the green button on the base to start the Source or use the mobile app. **One flash** of the button lets you know it started.

### To Start In Turbo Mode

Press and hold the green button on the base for a full 3 seconds; 2 slow flashes indicate the Source has started Turbo mode.

You can operate the Source completely without the app. The app simply provides helpful readouts showing temperature, vacuum level, and remaining run time.

The green comm icon indicates that the app is communicating with the Source via Bluetooth. A red comm icon indicates no Bluetooth communication: See [Troubleshooting on page 15](#).



comm icon

Mobile app **START PROCESS** button (When the process is running, the same button is for **STOP PROCESS**.)



STOP PROCESS



## 12. CHECK THE VACUUM

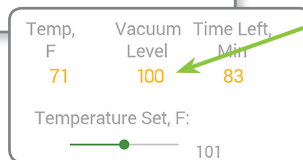
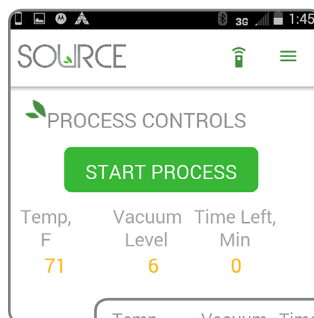
When the Source is first started, the vacuum pump will run for a few minutes until it reaches full vacuum. When you hear the vacuum pump start, press down firmly on the lid for 5-10 seconds. This helps to seal the chamber while the pump creates the vacuum. After that, the pump runs periodically to maintain the vacuum.

Use the mobile app to view the vacuum level. You should see the Vacuum Level value rise quickly, then at maximum vacuum the pump will shut off. If a seal is not established within 10 seconds, check the following:

- Make sure the vacuum relief screw, located below the green button on the base, is closed.
- Inspect the lower seal, collector, and upper seal and adjust them if needed to achieve better contact.
- Try pressing down on the lid if you haven't done so.
- Refer to [Troubleshooting on page 15](#).



*If the vacuum isn't established within 10 seconds, try pressing down on the lid to help it seal.*



*After starting, this value will begin to quickly rise to 100 at full vacuum.*

## 13. USING THE ICE TRAY

The ice tray cools the lid to increase condensation of the alcohol vapor, which accelerates the extraction process and allows the vacuum pumps to run less often. Simply fill the tray with ice or with water and freeze overnight, place it on the lid and begin the extraction.



*To condense the alcohol, run more rapidly, and have the pumps run less, always use the ice tray.*

#### 14. MONITOR EXTRACTION PROGRESS

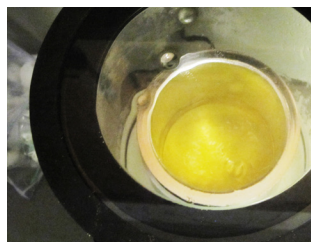
Monitor the extraction by watching for alcohol condensing on the lid and listening to the pump. The liquid in the reservoir cup will begin boiling and the alcohol will condense into the outer collector.

The vacuum pumps will run periodically to maintain the required vacuum level and the heat relay will make a clicking sound, but the noise level will be minimal. In Turbo mode expect the pumps to run more often.

The maximum run time is 120 minutes per cycle. It can be restarted mid-cycle or just when it ends without the need for a cool-down period. It's very important to closely monitor the extraction at the end to stop the process at the exact desired consistency.

Temp, F	Vacuum Level	Time Left, Min
71	6	0

View temperature, vacuum level, and run time for the extraction.



Monitor the extraction progress. You will see the alcohol condensing into the collector. About 4 hours is needed to extract the alcohol from a completely full reservoir.



**Closely monitor process during the last 10-20 minutes.**

The Source's temperature will rise above the intended temperature when the alcohol in the solution is gone and active evaporation ceases.



**Never leave the Source unattended while operating.**

#### 15. DECIDE WHEN EXTRACTION IS DONE

As the alcohol is evaporated from the tincture, it accumulates in the collector, and the plant extracts remain in the reservoir cup.

The extraction can be ended at any point, as a tincture, oil, sap, or wax-like substance otherwise known as an **absolute** or **concrete**. The target consistency depends completely on preference and intended use.

#### 16. STOP THE SOURCE

Press and release the green button once to manually stop the process. On the app, you can stop it by selecting the **STOP PROCESS** button.

On stopping, the green button on the base flashes **2 times** quickly.

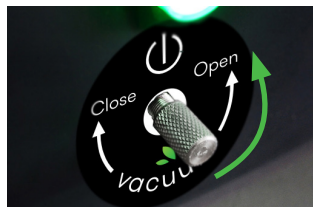


STOP PROCESS

Press the button to stop the process or use the app **STOP PROCESS** button. **2 quick flashes** indicates stopping.

### 17. RELEASE THE VACUUM

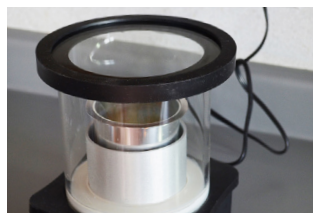
Turn the vacuum relief screw to the left 4-full turns (8-half turns) to relieve the pressure so you can remove the lid in the next step — **do not remove the screw completely**. It may take up to 60 seconds for pressure to release. Do not force the lid off.



*Loosen screw to the left to relieve vacuum pressure.*

### 18. ALLOW CHAMBER TO COOL

When finished, always allow the collector and reservoir cup to cool before handling and removing. If the Source is operated without alcohol to evaporate from the cup it will become very hot, allow to cool.



*Allow components to cool before handling and removing reservoir cup.*

### 19. REMOVE THE EXTRACT

Remove the lid. Unscrew the reservoir from the post and transfer the extract into a storage container. Store the extract in a sealed container away from direct light and heat, and out of reach of pets and children.



### 20. COLLECT ALCOHOL

Alcohol in the collector can be reused. If the collector is full, spillage may occur when pouring it out. Emptying the collector over a large bowl is recommended.

Most essential oils will not leave any taste or smell in the reclaimed alcohol. Some resinous plants, like hops, may leave a slight trace. If so, reuse that alcohol for similar extracts.

Always store alcohol out of reach of pets and children and well away from heat/combustion sources.



*Pour alcohol from collector into a container and store safely for reuse.*



### CARE FOR THE SOURCE:

It is very important to remember the Source is an advanced piece of technology and requires a certain degree of care to keep it in top operating condition.

**Glass Globe:** The glass globe will chip or crack if dropped or any collision with another object. If the glass suffers any damage the ability for a vacuum to form may become impossible. If this happens replacement globes are available for purchase.

**Crucible Cup:** The Crucible must never be tightened down onto the heating post. Lightly turn the cup onto the threaded heating post until it meets the slightest resistance and stop turning.

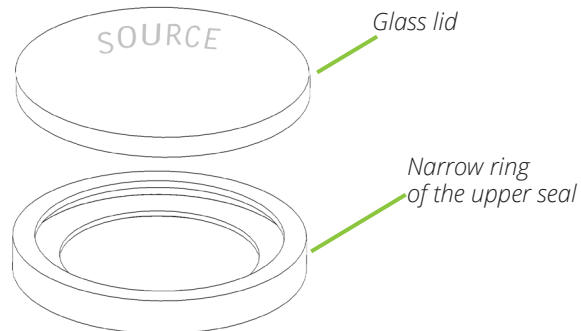
**Vacuum Relief Screw:** NEVER REMOVE the screw all the way. To release the vacuum turn only 4 full turns to the left and wait for the pressure to equalize. Removing the screw can result in cross threading and may make creating a vacuum impossible. If this happens send the unit back to ExtractCraft for repairs, but it is not covered under the manufacture defects warrantee.

**Green Button:** Keep green button clean and clear of any debris or sticky elements. If the button becomes stuck, you can use a small amount of alcohol on a cotton swap then let dry over night. If free movement is not restored, send back to ExtractCraft for repairs.

### CLEAN THE SOURCE

The removable parts, including the glass lid, upper seal, reservoir cup, glass collector, and lower seal, should be hand washed with a mild soap and water.

The base where the electronics are housed can not be put into water at any time. To clean the base, gently wipe with a damp towel.



## MOBILE APP

The mobile app works on Android or iOS mobile devices. It operates the Source via Bluetooth and allows you to monitor time, temperature, and vacuum as well as start and stop the unit.

### INSTALLING THE MOBILE APP

Download the mobile app from your app store.



For the Google Play store, tap the search bar and enter **Extractcraft**.

Tap **The Source by Extractcraft app**, then tap **INSTALL**. Tap **ACCEPT** to allow the app to use Bluetooth.



For iOS, use search to find **The Source by Extractcraft app**, then tap the Source app, and under the app image, tap **GET**.



Once you have the app installed, you should see the Source app icon on your device.



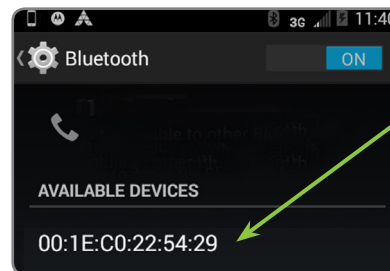
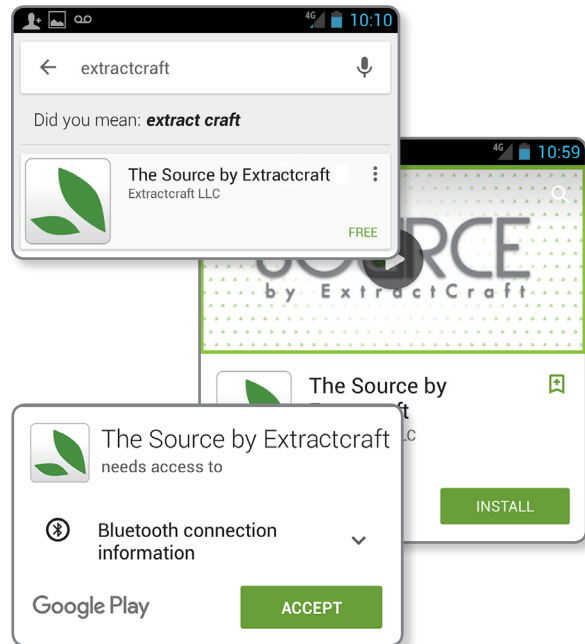
### SETTING UP BLUETOOTH

Use **Settings** to verify that you have Bluetooth ON.



Plug in the Source and verify the green light on the base is steadily on.


Tap Bluetooth to show the available devices. Your Source device ID should show as an available device. The last 4 digits of the device ID will be the same as those on the serial number label on the rear of your Source.




*The last 4 digits will be the same as those on the serial number sticker near the Source power cord.*



### LAUNCH THE SOURCE APP

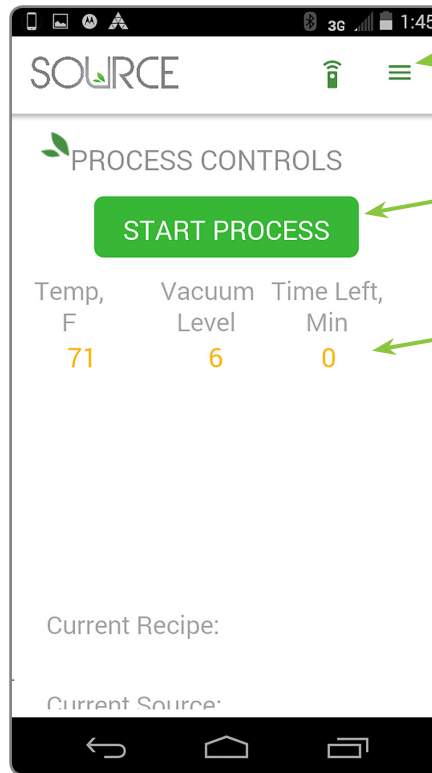
 The comm icon is green when communication has been established with the Source.

 A red icon indicates Bluetooth communication is not happening.

If this happens, try using your mobile device **Settings** to turn **Bluetooth ON** and select **Bluetooth > Search for Devices** to show the Source. Make sure you have the Source plugged into the power outlet and that the green light on its front is steadily on.



comm icon



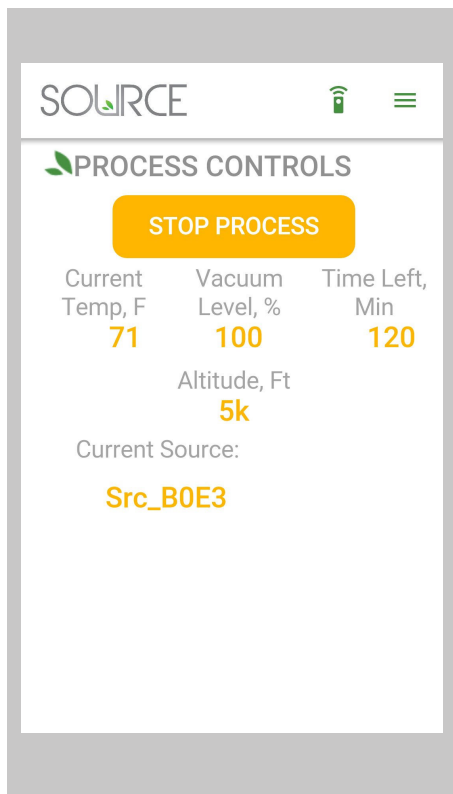
Menu



START/STOP PROCESS button

Temp, Vacuum Level, Time Left readouts

Temp, F	Vacuum Level	Time Left, Min
71	6	0



## USING THE MENU

Select the menu icon at the upper right of the app to choose between the Control screen and the About screen.

## START/STOP PROCESS BUTTON

Select this button to start or stop the unit's process. The green illuminated button will flash to confirm the app command.

## INTERPRETING THE DISPLAY VALUES

Process control readouts for the Source are available from the Control screen:

**Current Temp, F:** Displays the heat being pumped into the unit at any given time.

**Vacuum level %:** Indicates the current vacuum as a percentage of total achievable vacuum.

**Time Left, Min:** Shows the time remaining for the current cycle.

**Altitude, Ft:** Reflects the default altitude that has been programmed into the unit. If the displayed value is not the closest 1,000 feet of elevation for where you are located, follow the Altitude Tuning directions on page 13 to set accordingly.

**Current Source:** This area lists the ExtractCraft Source unit(s) being controlled.

## ALTITUDE TUNING

In order for your Source to perform at its full potential it's very important to program the elevation where it will be used to the closest 1,000 feet of elevation. Once you program an elevation it will remain as the default until it's manually changed to a different elevation.

### DETERMINING ELEVATION

Option 1- Ask Siri "What's my current elevation?"

Option 2- Visit [www.whatismyelevation.com](http://www.whatismyelevation.com) and enter your current location.

### STEPS TO PROGRAM ELEVATION

- 1) Plug in the Source and wait for the green lighted button to illuminate.
- 2) Push and hold the button for 8-seconds and release.
- 3) Observe the lighted button flash quickly 10-times.
- 4) Push the button once for every 1,000 feet of elevation up to 8,000 feet:

Sea Level.....no pushing (just wait for 10-seconds)

1,000-feet.....1-time

2,000-feet.....2-times

3,000-feet.....3-times

4,000-feet.....4-times

5,000-feet.....5-times

6,000-feet.....6-times

7,000-feet.....7-times

8,000-feet.....8-times

5) After entering your elevation the Source will pause for 10-seconds and the green lighted button will flash the same number of times it was pushed, once for every 1,000 feet.

6) If the Source repeats back the correct number of flashes you're finished and ready to start your extract crafting. If it's incorrect repeat steps 1-6 again. The elevation setting is stored permanently until the elevation is reprogrammed.



## BOTANICAL RECIPES

### ROSE EXTRACT

**Ingredients:** 100 grams dried rose petals, 12 oz. food-grade, grain alcohol of 190-proof (95%) alcohol

Tincture directions: Fill mason jar with rose petals. Fill alcohol to 1" above the level of the petals. Allow rose petal tincture to soak for 36 hours.

Strain tincture into Source reservoir cup. Follow typical extraction process.

### LAVENDER EXTRACT

**Ingredients:** 20 grams of lavender, 12 oz. food-grade, grain alcohol of 190-proof (95%) alcohol

Tincture directions: Fill jar with cleaned lavender, hand break or crush the leaves, do not grind. Cover to 1/4" past the plant volume with alcohol. Allow tincture to soak for 30 minutes.

Strain tincture into Source reservoir cup. Follow typical extraction process.

### PEACH HABANERO OIL MARGARITA ADDITIVE

**Ingredients:** 3 ripe peaches (pitted), 2 habanero peppers (remove stems), 7 oz. of freezer chilled food-grade, grain alcohol of 190-proof (95%) alcohol

Tincture directions: Blend all ingredients for 5 seconds in blender. Allow the mixture to soak 30 minutes.

Strain tincture into Source reservoir cup. Follow typical extraction process.

For this volume, the processing will take 240 minutes. Restart the Source after it automatically stops after 120 minutes. Check the consistency and taste, and continue to your desired result for the peach habanero extract.

Add full solution directly to a full bottle of tequila or add 1-5 drops per drink.

### LAVENDER, CAYENNE, LEMON TOPICAL RUB

**Ingredients:** 28 grams lavender, 2 dried cayenne peppers, 1/4 cup dried lemon peel, 5-7 oz. chilled food-grade, grain alcohol of 190-proof (95%) from freezer.

Tincture directions: Use an 8 oz. mason jar in which to combine all ingredients. Allow soak time of 30 minutes.

Strain tincture into Source reservoir cup. Follow typical extraction process. Processing should take 90 minutes. Stop the processing. Pour in bottle and allow the extract to settle before use.

Use oil directly on sore muscles or mix with coconut oil for topical cream.

Optionally you can prepare separate oils of lavender, cayenne (be careful!), and lemon. Warm up coconut oil to soft but not melted consistency, mix in lavender, cayenne, lemon oil and allow it to cool.

### SOAK TIMES FOR TINCTURES

The following are some general times for soaking your tinctures that may help your results.

#### 3-5 MINUTES.....

Hops	Basil	Ground Coffee	Mint
Thyme	Oregano	Ground Vanilla	

#### 30 MINUTES.....

Cayenne	Jalapeno	Habanero
Resins	Lobelia	Citronella
Aloe Vera	Clove	Rosemary
Lavender	Eucalyptus	Star Anise

#### 12 HOURS.....

Propolis	Avocado	Nuts
Dried Fruit	Maruja	

#### 24-96 HOURS.....

Rose Petal	Oak	Dried Citrus Peel	Pine
Dried Beans	Cedar	Whole Roots	

## TROUBLESHOOTING

<b>Problem</b>	<b>Possible cause</b>	<b>Solution</b>
Vacuum pump runs continually	Outer collector is not sealing.	Check the lower seal and collector are securely in place and clear of any debris. Try pressing down on the lid gently while the vacuum pump is running. Confirm the pressure relief screw is turned fully to the right and has not been crossthreaded. Use the mobile app to view the vacuum level. When the pump is running, the vacuum level should be steadily rising and will turn off when it reaches 100%. If the problem persists inspect the glass cylinder composing the collector for chips and damage. If the glass is obstructed or damaged a vacuum seal is not possible.
Comm icon in mobile app is red	Bluetooth not on/ Source not pairing	Check your mobile device settings and make sure you have Bluetooth ON. Plug in the Source and make sure the green light on the base is ON before launching the Source app.
The Source process turned off but the extraction is not finished	Automatic shut down due to time allowance	The Source process runs for a maximum of 120 minutes, then automatically shuts off. To run a longer extraction, simply restart it by pressing the green button or by using START PROCESS from the mobile app.
	Power outage or circuit breaker	To restart, unplug the Source and allow it to cool. Once it is cool, plug it back in and restart the process.
The green light does not illuminate	The power cord is not plugged in/outlet not getting power	Check that the power cord is firmly plugged into the outlet. Check your breaker or switches that control your outlet. Test another appliance in that outlet to verify it is working.
Cannot tell if the process is running	Green button is lit, but the Source is quiet.	Once the Source has been started, if you are unsure whether the process is stopped or running, you can check two ways: observing the green illuminated button which will blink once every 10-15 seconds when in operation; or by using the app to view the status.

## TECHNICAL SPECIFICATIONS

**Performance:** Processes 1/2- 2 oz of dry material

**Power:** 110-120 VAC 60 Hz, 2.1 A

**Connectivity:** Bluetooth BLE

**Dimensions:** The Source stands 10-inches tall. The base is 7-inches long by 7-inches wide.

**Safety Feature:** 120 minute maximum run time per start

## WARRANTY

Our goal is to have you enjoy the Source. ExtractCraft shall repair or replace the Source, at its sole discretion, for any manufacturing defect for a period of 12 months from shipment of the device. This includes losses or damages incurred in shipping.

**Before sending in a repair** contact ExtractCraft at [info@extractcraft.com](mailto:info@extractcraft.com) for help resolving the issue.

If needed, we will send instructions and a Return Merchandise Authorization Number (RMA#), and a shipping label to allow the return of the unit for resolution as quickly as possible.

**Save your box!** Original packing materials are required for valid warranty service and returns.

## GLOSSARY

**absolutes** aromatic concentrated oily mixtures extracted from plants requiring the use of solvent extraction techniques

**concrete** a more concentrated form than absolutes, resulting in a wax-like substance

**flash point** temperature at which a compound gives off sufficient vapor to ignite in air

**tincture** a solution of plant matter in alcohol

